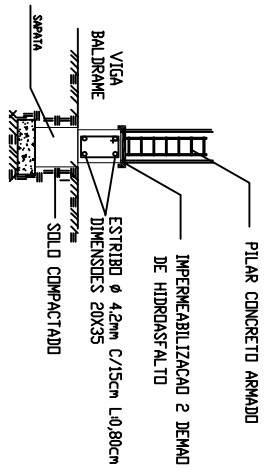
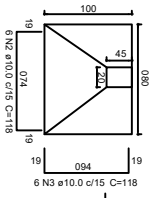


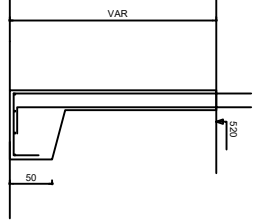
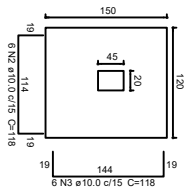
DETALHE DAS FUNDAÇÕES



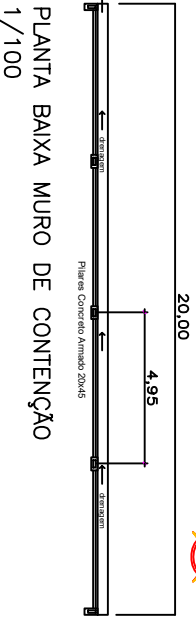
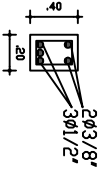
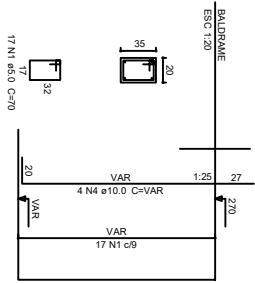
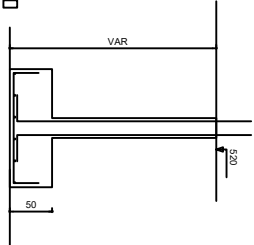
SAPATAS CANTOS
Planta
ESC: 1:25



SAPATAS
Planta
ESC: 1:25



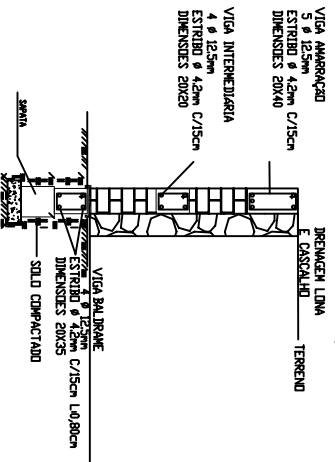
VIGAS DE CINTAMENTO



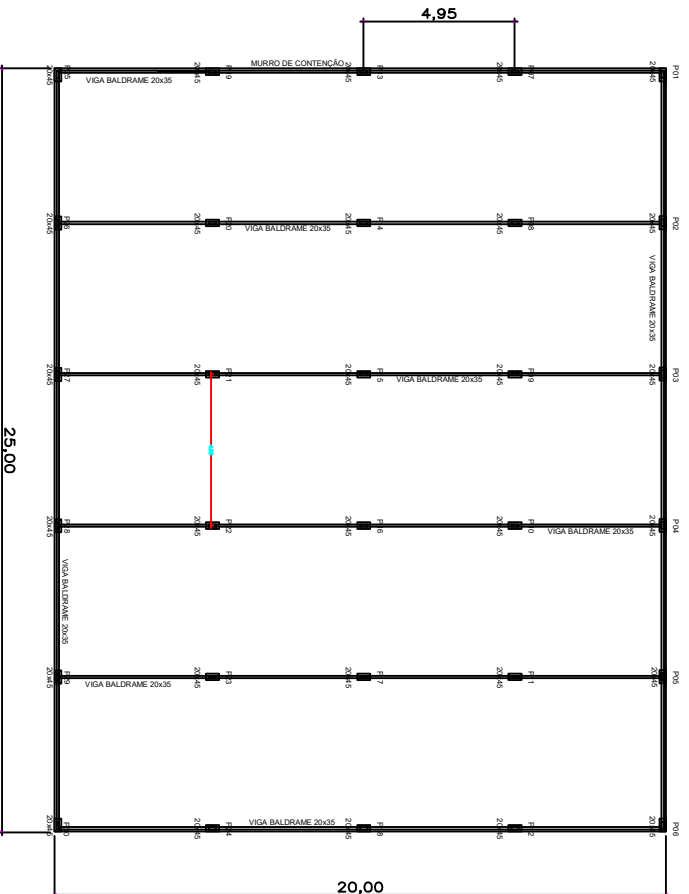
PLANTA BAIXA MURO DE CONTENÇÃO
1/100



DETALHE MURO DE CONTENÇÃO



PLANTA ESTRUTURAL, VIGA DE BALDRAME
1/100



DIREITOS AUTORAIS RESERVADOS. LEI 9.610 DE 19.02.98.

PREFEITURA MUNICIPAL DE SARANDI	
Palácio Municipal Dr. Mário Azambuja PRAÇA GETÚLIO VARGAS S/N - SARANDI/RS	
Projeto:	CONSTRUÇÃO DE QUADRA COBERTA-BARRIO KENNEDY
Proprietário:	PREFEITURA MUNICIPAL DE SARANDI Prefeito Municipal Paulo R. Vianei Kasper
Responsável Técnico:	JUNIOR VALMOR DE CARLI Arquiteto e Urbanista C.RUBENS/RS/1225
Valor:	R\$ 500,00h ²
Indicada:	INDICADA
Projeto:	04/05